



Explanations see practical informations on page 6 and 84!

## SAFETY STOREHOUSES WITH NATURAL VENTILATION

- ◆ For the passive storage of flammable liquids
- ◆ The legally required 0.4-fold minimum air exchange rate is achieved by continuous ventilation slots directly above the base sump tray and ventilation slots in the upper area of back wall and door
- ◆ Ground connection to avoid dangerous electrostatic charges
- ◆ Mounted delivery (SLH-NB 5 x 4, 5 x 6, 5 x 8, 4 x 6 and 4 x 8 premounted).

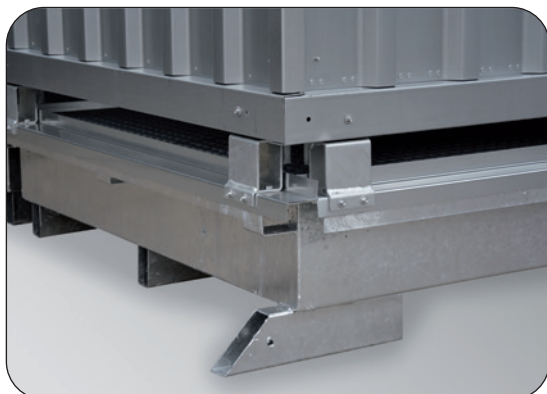
**Our standard - double door and lifting attachments for cranes!**



**Rate of air exchange has been tested and approved in accordance with the latest requirements of DIBt Berlin!**



**SLH-NB 3 x 2, galvanized, Article no. H63-1102-A, with optional ramp**



**i** Accessories such as lightning, ramps and shelves please see page 156/157!

Model	SLH-NB 1 x 2	SLH-NB 2 x 2	SLH-NB 3 x 2	SLH-NB 4 x 2	SLH-NB 5 x 2	SLH-NB 6 x 2	SLH-NB 4 x 3
External dimensions W x D x H (mm)	2075 x 1075 x 2570	2075 x 2075 x 2570	3075 x 2075 x 2570	4075 x 2075 x 2570	5075 x 2075 x 2570	6075 x 2075 x 2570	4075 x 2875 x 2585
Internal dimensions W x D x H (mm)	1980 x 980 x 2150	1980 x 1980 x 2150	2980 x 1980 x 2150	3980 x 1980 x 2150	4980 x 1980 x 2150	5980 x 1980 x 2150	3980 x 2780 x 2150
Sump capacity (l)	300	660	1000	1000	1300	1500	2 x 1000
Delivery	mounted	mounted	mounted	mounted	mounted	mounted	mounted
Article no., galvanized	H63-1100-A	H63-1101-A	H63-1102-A	H63-1103-A	H63-1104-A	H63-1105-A	H63-1107-C
Article no., galvanized and exterior painted	H63-2100-A	H63-2101-A	H63-2102-A	H63-2103-A	H63-2104-A	H63-2105-A	H63-2107-C



**SAFETY STOREHOUSES WITH NATURAL VENTILATION**

Rate of air exchange has been tested and approved in accordance with the latest requirements of DIBt Berlin (please see practical information on page 159, Ventilation of hazardous substances storages)!

**Our standard - double door and lifting attachments for cranes!**



**Double door in long side as standard, doors in short side on request!**  
For sizes 5 x 6, 5 x 8, 4 x 6 and 4 x 8 double door in short side!



**SLH-NB 5 x 2, galvanized, Article no. H63-1104-A**



**SLH-NB 2 x 2, galvanized, Article no. H63-1101-A**



**SLH-NB 3 x 2, galvanized, Article no. H63-1102-A, with optional ramp**

Model	SLH-NB 6 x 3	SLH-NB 5 x 4	SLH-NB 5 x 6	SLH-NB 5 x 8	SLH-NB 4 x 6	SLH-NB 4 x 8
External dimensions W x D x H (mm)	6075 x 2875 x 2570	5075 x 4330 x 2790	5075 x 6560 x 2790	5075 x 8790 x 2790	4075 x 6560 x 2790	4075 x 8790 x 2790
Internal dimensions W x D x H (mm)	5980 x 2780 x 2150	4980 x 4210 x 2080	4980 x 6440 x 2080	4980 x 8670 x 2080	3980 x 6440 x 2080	3980 x 8670 x 2080
Sump capacity (l)	2 x 1400	2 x 1300	3 x 1300	4 x 1300	3 x 1000	4 x 1000
Delivery	mounted	2 components premounted, final installation provided by the customer	3 components premounted, final installation provided by the customer	4 components premounted, final installation provided by the customer	3 components premounted, final installation provided by the customer	4 components premounted, final installation provided by the customer
Article no., galvanized	H63-1109-C	H63-1150-A	H63-1151-A	H63-1152-A	H63-1160-A	H63-1161-A
Article no., galvanized and exterior painted	H63-2109-C	H63-2150-A	H63-2151-A	H63-2152-A	H63-2160-A	H63-2161-A